

# COMPANY PROFILE



## N. I. ENGINEERING SERVICES

Prevent before fighting against fire



**Md. Ismail Hossain**  
Managing Director & CEO

**N.I. Engineering Services** is extremely thankful to you for getting an opportunity to introduce ourselves. **N.I. Engineering Services** started its journey to lead the engineering & Technology sector in Bangladesh. We are highly motivated diversified Electrical, Mechanical, Automation and others technology based products and services provider. Real Estate, Housing, Commercial Complex, Industries, Government, Autonomous, Multinational, Military etc. Our engineering team makes design any facility based on international and local which will drive the best result to the utmost satisfaction of the client requirements.

#### WHO WE ARE?

**N.I. Engineering Services** is a leading Fire Protection, Engineering, Import, Supply and service Company offering a "one stop solution Provider" for client's requirements, It's equipped with a professional staff and workmanship to carry out all kind of Fire Fighting & Electronic Jobs.

#### WHAT WE DO?

We maintain all works through skilled manpower with world class tools and technology, and never let our quality objectionable.

The company is driven by high values that include integrity, transparency and delivering the highest quality within specified time limit with full customers satisfaction. that's why more than

#### OUR STRENGTHS

Honesty, Keep commitment, skilled manpower and customer satisfaction.



# Our Company

## N.I. Engineering Services

### VISION

To expand our business to the national & international market and to be one of the market leaders in the Fire Fighting field through wider local and international market penetration.

### MISSION

Our mission to secure life and property, promote public safety and foster economic growth through our portfolio of International Brands and excellent Customer Service. We believe in providing innovative and cost effective fire protection and safety solutions by which our customer feels safe and secure.

### Our Core Values

- ||➤ Build relationships with internal and external customers.
- ||➤ Understand their needs.
- ||➤ Be honest and timely completion with our commitments and actions.
- ||➤ Achieve better results through collaborative efforts and collective wisdom.

## Services :

N.I. Engineering Services provides the following services for the region:

Supply of Fire Fighting & Fire Alarm Equipment.

Design, Installation, Testing & Commissioning of various Fire Alarm and Fire Fighting Systems.

Maintenance, Inspection & Refilling of all types of Fire Extinguishers, using a well Supply & Installation of CCTV, Access Control System & Intruder Alarm equipped workshop.

Finally, we constantly monitor our customer satisfaction level and strive to improve our performance.

## Facilities :

Our team of fire protection engineers, professionals and skilled technicians are well experienced in interpreting specifications and requirements of enforcement authorities. With the understanding of these requirements, our engineers and technicians will support installations as well as provide product training and efficient maintenance to ensure optimum performance of the systems.

## Main Fire Equipments Brand Sold :

### Fire Detection & Fire alarm

Country of Origin: U.K, USA, TAIWAN, BULGERIA

### Fire Pump

Country of Origin: U.K, USA, AUSTRALIA, TURKEY

### Fire Hydrant / Sprinkler /Control valve / Landing valve & Hose reel

Country of Origin: U.K, USA, AUSTRALIA, UAE

### Inergen gas, F.M-200 & CO2 system

Country of Origin: USA, MALAYSIA.

### Access Control / Time Attendance Management

Country of Origin: MALAYSIA, TAIWAN, CHINA

### Burglar Alarm

Country of Origin: CANADA. CHINA, MALAYSIA.

### CCTV

Country of Origin: U.S.A, MALAYSIA, KOREA, TAIWAN, CHINA.

### BMS SYSTEM, EMS SYSTEM

Country of Origin: U.S.A. CHINA/CANADA

### PA System

Country of Origin: U.S.A, GERMANY, INDIA, CHINA.

### Ventilation / HVAC/Utility Services

Country of Origin: MALAYSIA, FRANCE, CHINA

### Fire Door Supply

Country of Origin: MALAYSIA, CHINA, INDIA, UAE & BANGLADESH

### Diesel & Gas Generator

Cummins, U.K , USA, MALAYSIA, TAIWAN, CHINA

FG Wilson, U.K.

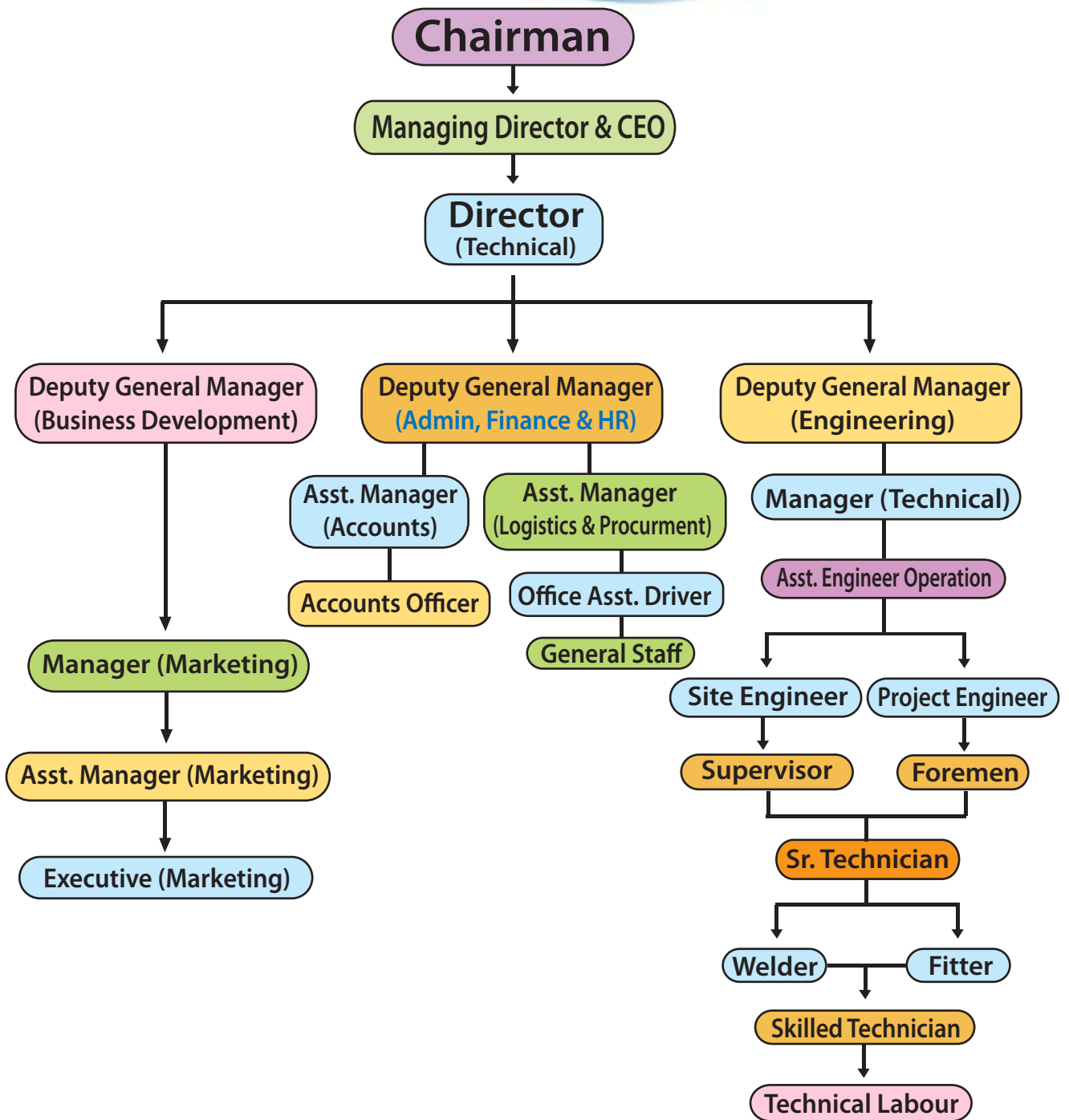
### Transformer

DESH Engineers & MFG. Co. Ltd.

50– 2000 KVA

LT & HT Switchgear & PFI Panel are assembled with imported accessories





**N.I. Engineering Services** maintains a bright reputation for quality and a strong commitment to customer satisfaction. By continuously improving service provided **N.I. Engineering Services** provides the following services for the region:

1. Supply of Fire Fighting & Fire Alarm Equipment.
2. Design, Installation, Testing & Commissioning of various Fire Alarm and Fire Fighting Systems as follows:



3. Carry out all type of maintenance works for above mentioned systems.
4. Maintenance, Inspection & Refilling of all types of Fire Extinguishers, using a well equipped workshop.



## Automatic Fire Detection Systems :



Automatic fire detection systems, when combined with other elements of an emergency response and evacuation plan can significantly reduce property damage, personal injuries, and loss of life from fire in the workplace. Their main function is to quickly identify a developing fire and alert building occupants and emergency response personnel before extensive damage occurs. Automatic fire detection systems do this by using electronic sensors to detect the smoke, heat, or flames from a fire and providing an early warning.

## Fire Hydrant System

**Hydrant System:** A fire hydrant is an active fire protection measure, and a connection point by which firefighters can tap into a water supply.

The invention of a post- or pillar-type fire hydrant is generally credited to Frederick Graff, Sr., chief engineer of the Philadelphia Water Works around 1801. It had a combination hose/faucet outlet and was of "wet barrel" design with the valve in the top. It is said that Graff held the first fire hydrant patent, but this cannot be verified because an 1836 fire in the US Patent Office destroyed many patent records



**Automatic Sprinkler Systems:** Fire sprinkler system, a network of piping filled with water under pressure is installed behind the walls and ceilings, and individual sprinklers are placed along the piping to protect the areas beneath them. Because the water is always in the piping, the fire sprinkler system is always "on call". If fire breaks out, the air temperature above the fire rises and the sprinkler activates when the air temperature gets high enough. The sprinkler sprays water forcefully over the flames, extinguishing them completely in most cases, or at least controlling the heat and limiting the development of toxic smoke until the fire department arrives. Only the sprinkler(s) nearest the fire activate. Smoke will not activate sprinklers. Sprinklers are so effective because they react so quickly. They reduce the risk of death or injury from a fire because they dramatically reduce the heat, flames and smoke produced, allowing people the time to evacuate the home.







# ACCESS CONTROL SYSTEMS



## Access Control System

Access controls are security features that control how users and systems communicate and interact with other systems and resources.

Access is the flow of information between a subject and an object.

A subject is an active entity that requests access to an object or the data within an object. E.g.: user, program, process etc.

An object is a passive entity that contains the information. E.g.: Computer, Database, File, Program etc.

Access controls give organization the ability to control, restrict, monitor, and protect resource availability, integrity and confidentiality



## CCTV System



Closed-circuit television (CCTV), also known as video surveillance, is the use of video cameras to transmit a signal to a specific place, on a limited set of monitors. It differs from broadcast television in that the signal is not openly transmitted, though it may employ point to point (P2P), point to multipoint, or mesh wireless links. Though almost all video cameras fit this definition, the term is most often applied to those used for surveillance in areas that may need monitoring such as banks, casinos, airports, military installations, in industrial plants, providing the opportunity to observe parts of a process from a central control room. This is especially convenient when the environment isn't suitable for humans.



# N. I. ENGINEERING SERVICES

Prevent before fighting against fire



## Time Attendance Management System

Time Attendance system | Access control System is electronic Door Control Automation systems, which are designed to control who has allow access to a Secure Area.

The most simple example of a access control system is a door which is locked to limiting people to one side of the door or the other. The Technology like RFID Or Key card systems



operate on the relationship between a plastic card and electronic access control locks. Eachcard is programmed to respond to a particular key card reader or more with a lock or a set of locks. In case of Biometric Access Control and Attendance system, the device, which read human finger and store information about that person. Whenever particular person come, he or she have to put finger in device. Device identify the person whether the person are allow to access the area and keep his/her time and date of access into device memory.

## Public Address System



A Public Address (PA) system is a collection of audio equipment that allows broadcasts over a designated area. Often found in schools and office buildings, PA systems can be used for general announcements or emergency information, providing a simple way to get information out quickly. PA systems can be basic or advanced, and people can customize them to fit a variety of needs.



# N. I. ENGINEERING SERVICES

Prevent before fighting against fire



Lighting offers the best professional system solutions and ODM service with the top lighting expert team.

## LED Lighting System:

A lightning arrester is a device used on electrical power systems and telecommunications systems to protect the insulation and conductors of the system from the damaging effects of lightning. The typical lightning arrester has a high-voltage terminal and a ground terminal. When a lightning surge (or switching surge, which is very similar) travels along the power line to the arrester, the current from the surge is diverted through the arrester, in most cases to earth.

In telegraphy and telephony, a lightning arrester is placed where wires enter a structure, preventing damage to electronic instruments within and ensuring the safety of individuals near them. Smaller versions of lightning arresters, also called surge protectors, are devices that are connected between each electrical conductor in power and communications systems and the Earth. These prevent the flow of the normal power or signal currents to ground, but provide a path over which high-voltage lightning current flows, bypassing the connected equipment. Their purpose is to limit the rise in voltage when a communications or power line is struck by lightning or is near to a lightning strike.

Pallet flow rack consists of pallet rack supporting roller lanes installed at a slight incline.

Pallets are loaded into the rear of the pallet flow rack system and retrieved in the front of the pallet flow system.

Pallets roll forward powered by gravity.

Brakes mounted on the rollers reduce the speed of the pallets as they roll from the rear to the front.

Pallet flow creates maximum storage density.

(reduce the number of aisles in your warehouse & increase the number of pallets in your warehouse)

The benefits of a high density, first in first out system are maximized when the rotation of perishables is critical and the cost of warehouse space is high.







**Jockey Pump**



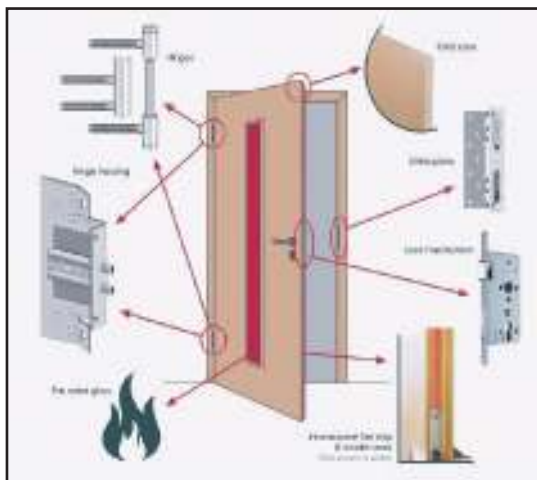
**Engine Driven Fire Pump**



**Fire Pump**



**Fire Fighting Accessories**



**Fire Rated Door**

A fire door is a door with a fire-resistance rating (sometimes referred to as a fire protection rating for closures) used as part of a passive fire protection system to reduce the spread of fire or smoke between compartments and to enable safe egress from a building or structure or ship.



**Fire Fighting Accessories**



**Inergen System :** The INERGEN Fire Suppression System protects enclosed areas where people may be present, fire May strike day or night, and damage from conventional agents cannot be tolerated. Upon discharge, INERGEN agent fills the room, mixing with the air to suppress fires quickly and effectively. INERGEN agent is non-synthetic and made of naturally occurring gases: nitrogen, argon, and carbon dioxide. Once discharged, it returns to the atmosphere in its natural state.



**FM-200 System**

FM-200® is a clean, colorless, and environmentally friendly fire suppression agent that is electrically non-conductive and safe for humans. It extinguishes flames primarily through heat absorption, leaving no residue, thus minimizing downtime after a fire and making FM-200 suppression systems accepted and respected worldwide. FM-200 fire extinguishing systems are designed to be discharged within 10 seconds into a room, area, or enclosure with the structural integrity to retain the agent. The FM-200 uniformly mixes throughout the protected area achieving a minimum concentration level in accordance with NFPA 2001 and/or agency listings.



**CO<sup>2</sup>System**

Carbon dioxide or CO<sub>2</sub> is a colorless, odorless, electrically non-conductive gas that is highly efficient as a fire suppression agent. Carbon Dioxide fire protection systems use intelligent, reliable and fast-acting control panels to quickly sense a fire before it can cause damage to property. Carbon dioxide gas has a high rate of expansion, which allows CO<sub>2</sub> fire protection system to work fast. When applied to a fire, CO<sub>2</sub> provides a heavy blanket of gas that reduces the oxygen level to a point where combustion cannot occur.



**Fire Fighting Accessories**





## Car Barrier System:

Barrier gates are the ideal solution if you need to control vehicle transit in public parking areas, car parks, private and block of flats entrances, even when the traffic is heavy. They are made of a motor body and control unit, protected by a case with different finishes, in particular in stainless steel for applications in critical environment conditions, like heavy traffic areas or near the sea. There are motorizations powered by 230 V and by 24 Vdc, which ensure high performances and safety, making them ideal for the automation of private and public car parks which are subject to frequent vehicle transit during the day.

there an active neighbourhood watch giving you confidence that someone will call the police? Or perhaps you have friends and relatives who live very close by who you could count on to take action?

Automatic Gate Openers either work on a single or double RAMP or SLIDING system depending on the gate type and/or space available. The gate opener can be powered by either using a solar power panel (pictured right), popular on farms or long driveways, or run off the main house power supply. To use the gate opener all you have to do is press the entry transmitter in your car

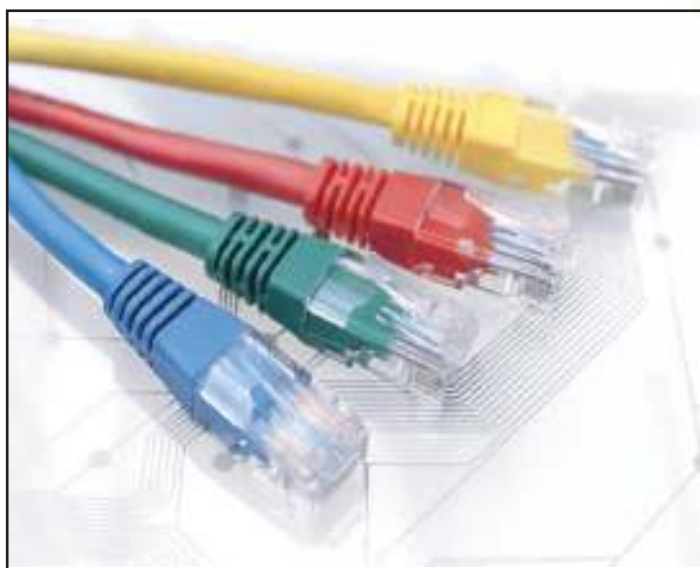


(similar to a garage door opener) and the Automatic Gate Opener will open your gate. Once you exit, you can close the gate with another press of the remote, or it will close by itself few seconds later-so you'll never accidentally leave it open!



# N. I. ENGINEERING SERVICES

Prevent before fighting against fire



**Short circuit:** If a ventilation system is poorly designed, ‘short circuiting’ may occur in which fresh ventilation air is extracted from the building before it has mixed with or displaced stale air. This can occur if air diffusers and outlets are positioned too close to each other or, in the case of displacement systems, the supply air temperature is higher than the room air temperature.

A network management system (NMS) is a set of hardware and/or software tools that allow an IT professional to supervise the individual components of a network within a larger network management framework.

Network management system components assist with:

- Network device discovery - identifying what devices are present on a network.
- Network device monitoring - monitoring at the device level to determine the health of network components and the extent to which their performance matches capacity plans and intra-enterprise service-level agreements (SLAs).
- Network performance analysis - tracking performance indicators such as bandwidth utilization, packet loss, latency, availability and uptime of routers, switches and other Simple Network Management Protocol (SNMP)-enabled devices.
- Intelligent notifications - configurable alerts that will respond to specific network scenarios by paging, emailing, calling or texting a network administrator.



**N. I. ENGINEERING SERVICES**

**Prevent before fighting against fire**





Invented for life



fivalcolimited



PROGRAM Gas Control Panel



JOVISION IP CC Camera



CC Camera



CC Camera



Engine Driven Pump



Generator



Patterson Engine Driven & Electric Driven Pump



Naffco Diesel Pump



- ★ Fire Safety & Security
- ★ CC TV & PA System
- ★ FM200 & CO2 System

[www.niengineeringbd.com](http://www.niengineeringbd.com)

- ★ Generator
- ★ HVAC & R
- ★ PABX System

# Our Client







**N. I. ENGINEERING SERVICES**

Prevent before fighting against fire

## COMPANY PROFILE



### LOCATE US

Corporate Office : House #Ga- 64/B, (Ground Floor)  
Middle Badda, Gulshan, Dhaka-1212, Bangladesh.

### GET IN TOUCH

Cell : +88-01711-135731, 01670-236785

T : +88-02-9882326, F : +88-02-9882326

E : niengineeringbd@gmail.com

:info@niengineeringbd.com

W : www.niengineeringbd.com

Prevent before fighting against fire